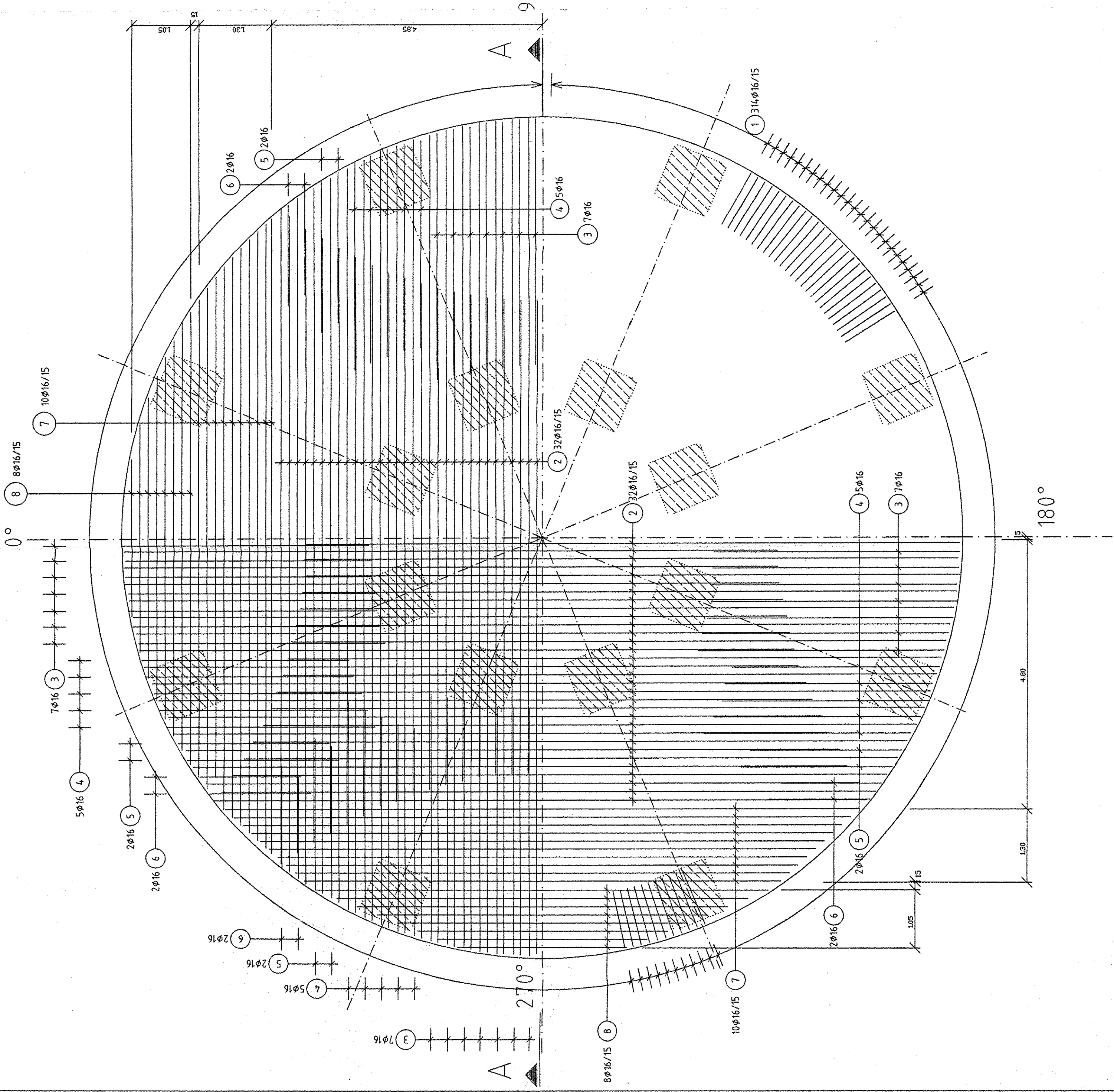


TOP VIEW FOUNDATION

SCALE 1/50

BOTTOM LAYER



SECTION A-A

SCALE 1/50

Pos.	Antz.	Ø	Länge	Bem.
1	1354	11.954	11.954	
2	10.728	11.328	11.328	
3	10.728	11.328	11.328	
4	10.728	11.328	11.328	
5	10.728	11.328	11.328	
6	10.728	11.328	11.328	
7	10.728	11.328	11.328	
8	10.728	11.328	11.328	
9	10.728	11.328	11.328	
10	10.728	11.328	11.328	

2x(26) 2x(10) 20ø16/15/22-1188 di=29.5cm

2x(25) 2x(10) 16ø16/15/22-1188 di=29.5cm

2x(16) 4x(2) 8ø16/15/22-1188 di=29.5cm

2x(15) 4x(2) 8ø16/15/22-1188 di=29.5cm

2x(14) 4x(2) 8ø16/15/22-1188 di=29.5cm

2x(13) 4x(2) 8ø16/15/22-1188 di=29.5cm

2x(12) 4x(2) 8ø16/15/22-1188 di=29.5cm

2x(11) 4x(2) 8ø16/15/22-1188 di=29.5cm

2x(10) 4x(2) 8ø16/15/22-1188 di=29.5cm

2x(9) 4x(2) 8ø16/15/22-1188 di=29.5cm

2x(8) 4x(2) 8ø16/15/22-1188 di=29.5cm

2x(7) 4x(2) 8ø16/15/22-1188 di=29.5cm

2x(6) 4x(2) 8ø16/15/22-1188 di=29.5cm

2x(5) 4x(2) 8ø16/15/22-1188 di=29.5cm

2x(4) 4x(2) 8ø16/15/22-1188 di=29.5cm

2x(3) 4x(2) 8ø16/15/22-1188 di=29.5cm

2x(2) 4x(2) 8ø16/15/22-1188 di=29.5cm

2x(1) 4x(2) 8ø16/15/22-1188 di=29.5cm

2x(0) 4x(2) 8ø16/15/22-1188 di=29.5cm

2x(-1) 4x(2) 8ø16/15/22-1188 di=29.5cm

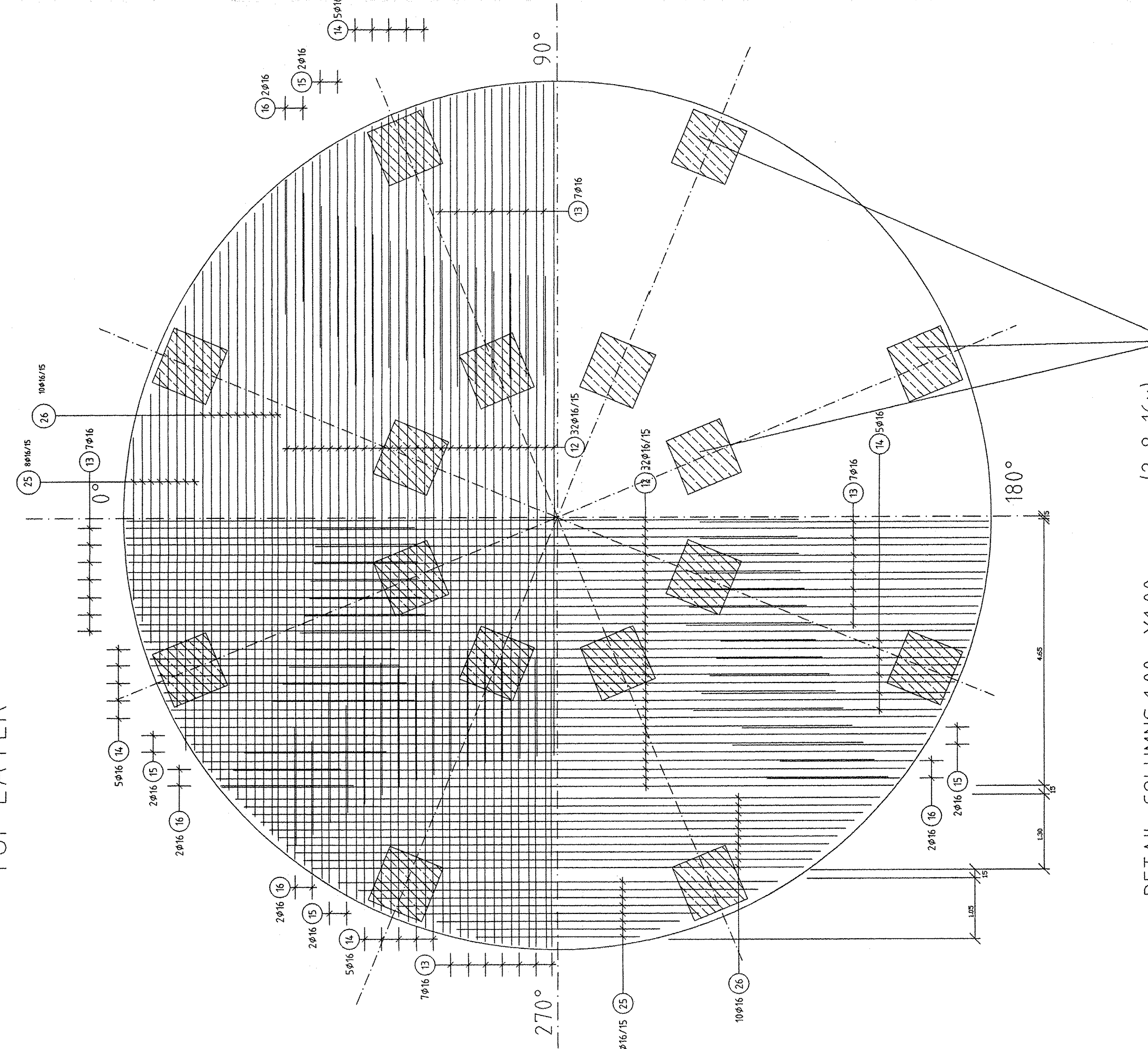
2x(-2) 4x(2) 8ø16/15/22-1188 di=29.5cm

2x(-3) 4x(2) 8ø16/15/22-1188 di=29.5cm

TOP VIEW FOUNDATION

SCALE 1/50

TOP LAYER



DETAIL COLUMNS 1.00m X 1.00m (2x8=16x)

16x(18) 3ø10/2.52

16x(17) 3ø10/3.94

16x(16) 3ø10/5.36

16x(15) 3ø10/6.78

16x(14) 3ø10/8.20

16x(13) 3ø10/9.62

16x(12) 3ø10/11.04

16x(11) 3ø10/12.46

16x(10) 3ø10/13.88

16x(9) 3ø10/15.30

16x(8) 3ø10/16.72

16x(7) 3ø10/18.14

16x(6) 3ø10/19.56

16x(5) 3ø10/20.98

16x(4) 3ø10/22.40

16x(3) 3ø10/23.82

16x(2) 3ø10/25.24

16x(1) 3ø10/26.66

16x(0) 3ø10/28.08

16x(-1) 3ø10/29.50

16x(-2) 3ø10/30.92

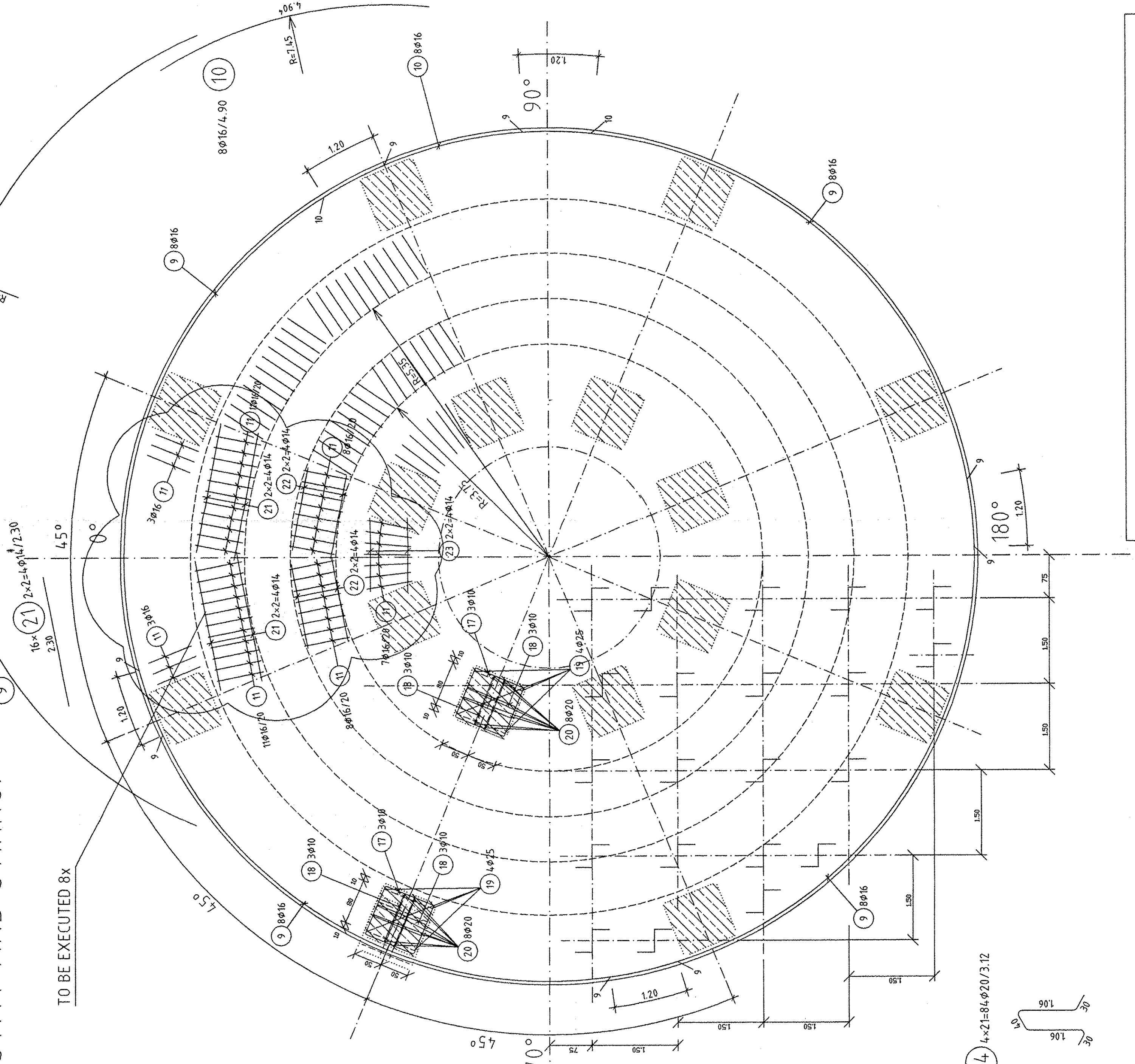
16x(-3) 3ø10/32.34

16x(-4) 3ø10/33.76

16x(-5) 3ø10/35.18

TOP VIEW

STAY AND STIRRUP



CURING AFTER CASTING OF CONCRETE ACC. TO THE RESPECTIVE DIRECTIONS (FREE SURFACES OF CONCRETE TO BE COVERED AND MOISTENED DURING TWO WEEKS)

SEE DRAWING-NO. 7574-1

(FOUNDATION FOR LOX-TANK FORMWORK)

BSI 510									
Pos.	Antz.	Ø	Länge	Bem.	Pos.	Antz.	Ø	Länge	Bem.
1	376	16	3.54		11	16	16	2.52	
2	172	16	2.00		12	16	16	3.65	
3	172	16	4.70		13	16	16	2.65	
4	40	16	4.00		14	17	148	10	3.94
5	16	16	3.00		15	18	96	10	2.52
6	40	16	3.00		16	18	96	10	2.52
7	40	16	10.55	1M	17	20	64	20	5.20
8	32	16	6.17	1M	18	21	64	14	2.30
9	32	16	12.00		19	22	64	14	1.50
10	8	16	4.90		20	23	32	14	1.30
11	16	16	4.90		21	23	32	14	1.30
12	16	16	12.00		22	25	32	16	5.94
13	16	16	12.00		23	25	32	16	5.94
14	16	16	5.35		24	26	40	16	10.55
					Ø (mm) L (m) G (kg)				
					14 320.40 265.952				
					20 574.88 1149.354				
					Ø (mm) G (kg)				
					6 - 28 18334.595				
					Gesamtgewicht 18334.595 kg				